

TECHNICAL INFORMATION:

PROJECT:
Rehabilitation and Addition to:
1001 Second Avenue
Asbury Park, NJ 07712

OWNER:
THE LOFTS AT ASBURY PARK, LLC
568 Cookman Ave.
Asbury Park, NJ 07712
t. 1.732.775.8577
f. 1.732.775.8599
e. othggj@yahoo.com

CONSULTANTS:
Arco Engineering
Jose J. Mantrana P.E.
t. 1.201.635.0282
c. 1.201.681.5444
jmantrana@gmail.com

PERMIT SUBMISSION: 11 NOVEMBER 2008

PROGRESS: 31 JULY 2009

REVISIONS

NO.	DATE	DESCRIPTION
1	12/09/08	AS PER ZONING REQUESTS

PROJECT NUMBER: _____ DRAWN BY: SCRL/PLC/JF
DESIGNED BY: RGR/CHEKED BY: RGR/IR

SHEET TITLE:
SECOND FLOOR PLAN & LOFT

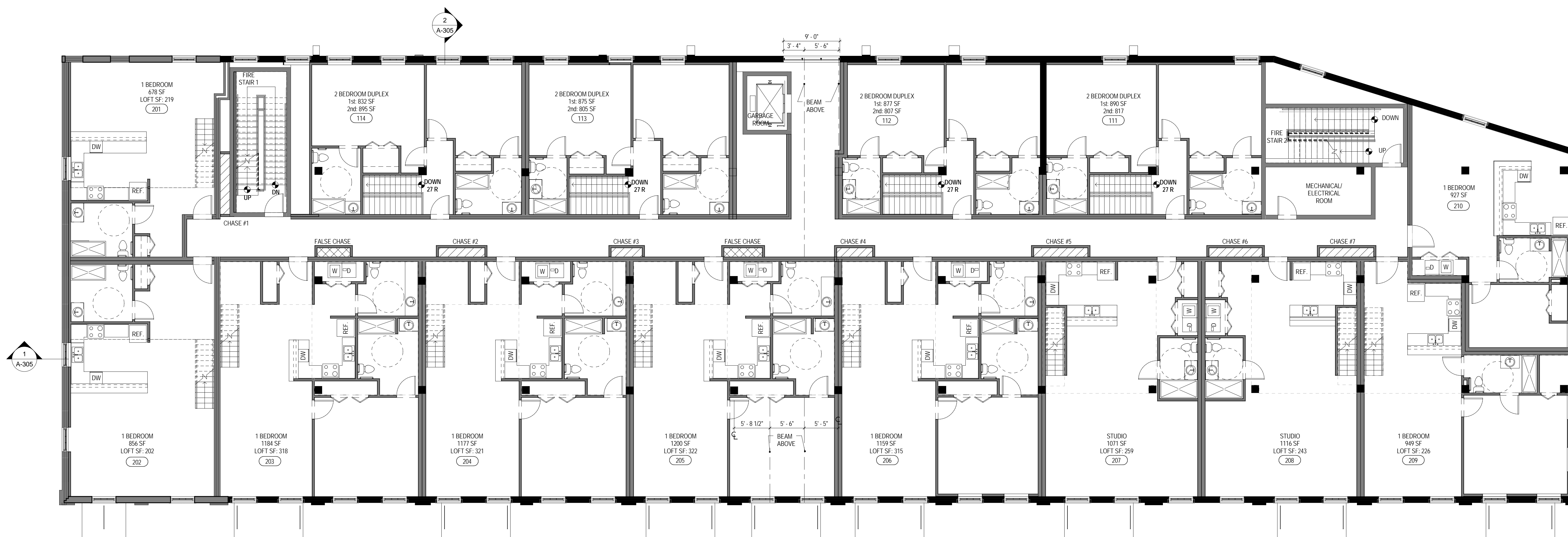
SHEET NO.: _____ CONTROL NO.: _____

A-102



2 SECOND FLOOR LOFT KEY PLAN
A-102 SC: 1/8" = 1'-0"

A-119 SECOND FLOOR LOFT PARTIAL PLAN WEST
A-118 SECOND FLOOR LOFT PARTIAL PLAN EAST



1 SECOND FLOOR KEY PLAN
A-101 SC: 1/8" = 1'-0"

A-117 SECOND FLOOR PARTIAL PLAN WEST
A-116 SECOND FLOOR PARTIAL PLAN EAST